



**KOEDN®**

# Beautiful, Durable Materials

textiles and coatings

**22/23**

[KOEDN®.com.au/fabrics](https://www.koedn.com.au/fabrics)



# Shade Skin Range

Monotec

**22/23**

[KOEDN®.com.au/fabrics](https://www.koedn.com.au/fabrics)

## SHADE TEXTILES

# OUR PROMISE

Monotec textiles give KOEDN®s designers an inspired palette of rich colours, styles and textures to create extraordinary outdoor structures. Architects use KOEDN® as a building material to create innovative shade structures and enhance their ideas and designs. Consumers use our textiles to express their unique style and create beautiful and welcoming spaces outdoors.



### UV / Fade Resistant

Monotec fibres are saturated with highly UV-stable pigments. Traditional dyeing methods only add colour to the fibre exterior. Monotec fabrics' performance characteristics are an integral part of the fabric, not an applied finish that would wash off over time.



### Mold / Mildew Resistant

Due to Monotec's smooth surface made from round monofilament yarn, they are more resistant to dirt and debris build-up. To keep your fabrics looking clean, a hose or gurney ensures your fabric stays looking fresh.



### Easy Maintenance

The strength of Monotec's round monofilament yarn, when combined with the close lock-stitch construction makes it almost impossible to penetrate the fabric with damaging objects. Due to the positive memory in the round monofilament yarn, when installed correctly, installers will not need to return to re-tension the fabric. This ensures that there are minimal ongoing costs to owners long after the installation is complete.



### Superior Strength

Monotec is the only shade cloth to retain its permanent shape and design. Due to the unique construction using 100% round monofilament yarn, Monotec 370 is stronger than other shade cloth types. Monotec fibres exceed Australian Standard requirements for bursting and tensile strength, with Superior durability and performance, even in excessively high wind conditions. There is no need to re-tighten, as the fabric is heat set for extra stability and improved handling characteristics.



### Sun Protection

The Skin Cancer Foundation recommends our fabrics in shading products as an aid in preventing sun-induced damage to the skin as a part of a complete sun protection regimen, including regular use of sunscreen.



### Australian Made

Manufactured in Brisbane, QLD, utilising the latest in knitting technology, Monotec fabrics are internationally recognised and used in multiple award-winning projects in Australia & around the world.

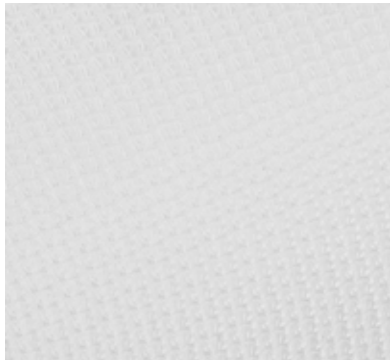


### Award Winning

Monotec 370 series shade cloth is the fabric of choice for multiple award winning projects both in Australia and around the world.

**KOEDN®**





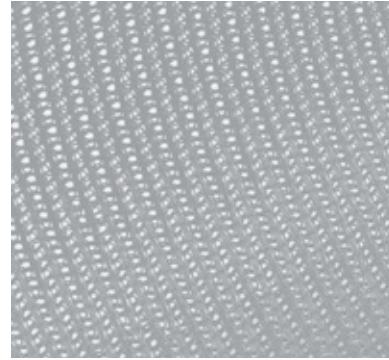
Chino Cream

UV Block %	Shade Factor %
85.2	70.9



Karloo Sand

UV Block %	Shade Factor %
84.7	72.5



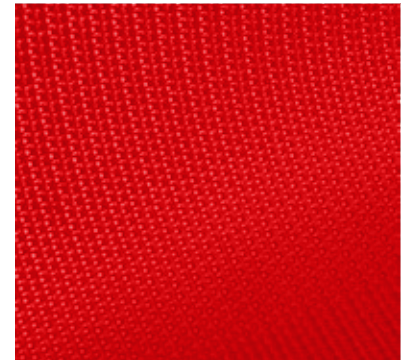
Titanium

UV Block %	Shade Factor %
84.2	84.5



Sherbet

UV Block %	Shade Factor %
85.4	79.4



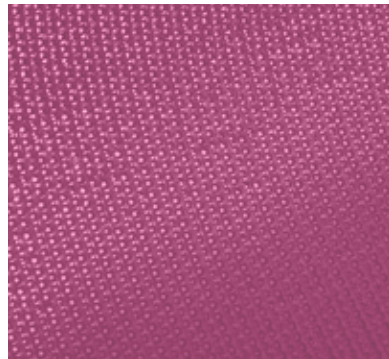
Candy

UV Block %	Shade Factor %
85.8	82.8



Marrocan Terracota

UV Block %	Shade Factor %
86.4	82.6



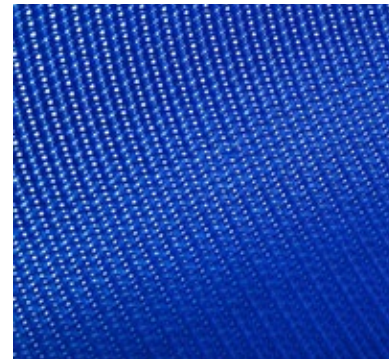
Bubblemum

UV Block %	Shade Factor %
86.9	83.6



Mellow Haze

UV Block %	Shade Factor %
84.1	74.7



Bundeena

UV Block %	Shade Factor %
85.9	83.2



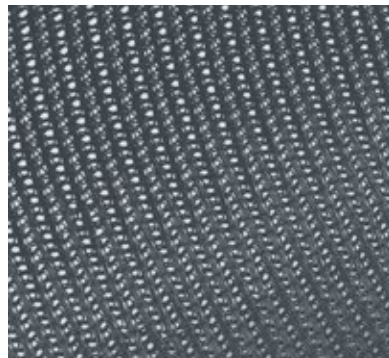
Jazberry

UV Block %	Shade Factor %
86.1	84.7



Lime Fizz

UV Block %	Shade Factor %
87.8	84.3



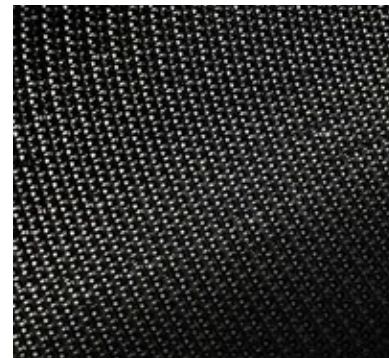
Graphite

UV Block %	Shade Factor %
87.2	87.0



Sheba

UV Block %	Shade Factor %
87.7	86.9



Domino

UV Block %	Shade Factor %
88.5	88.4



Koonunga

UV Block %	Shade Factor %
86.9	86.1





**KOEDN®**

[KOEDN®.com.au/fabrics](http://KOEDN®.com.au/fabrics)